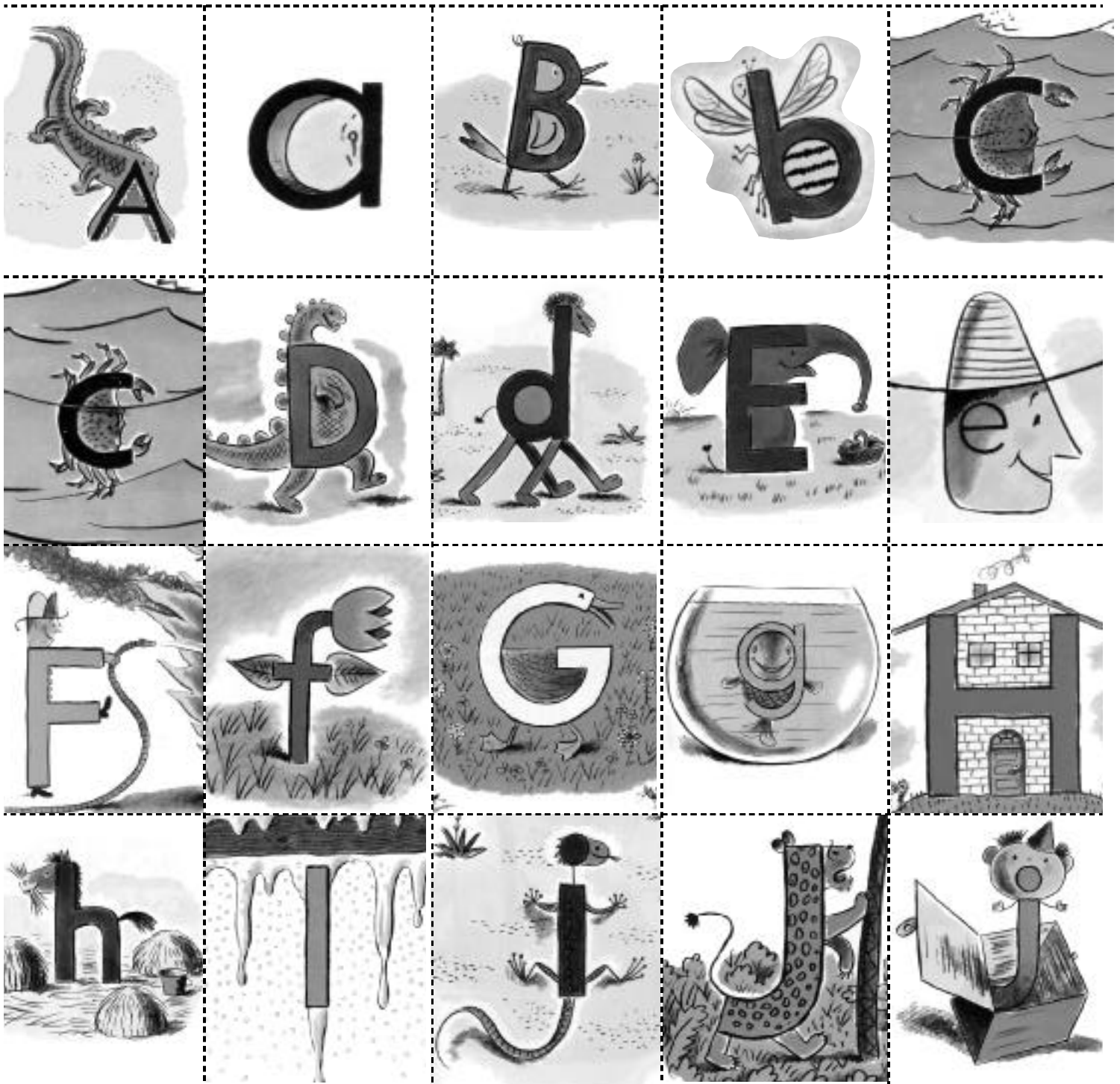
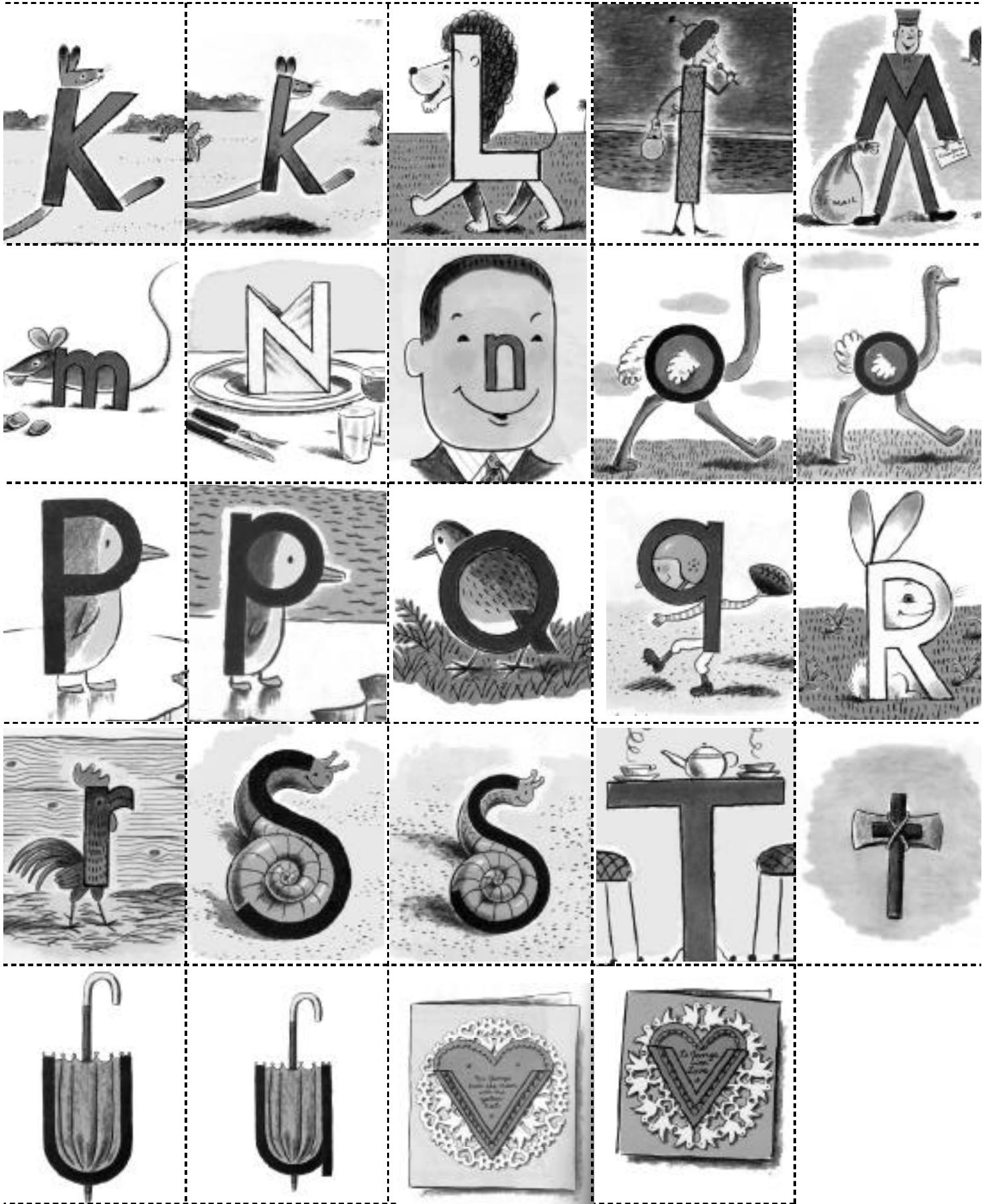


UPPER AND LOWER CASE CONCENTRATION

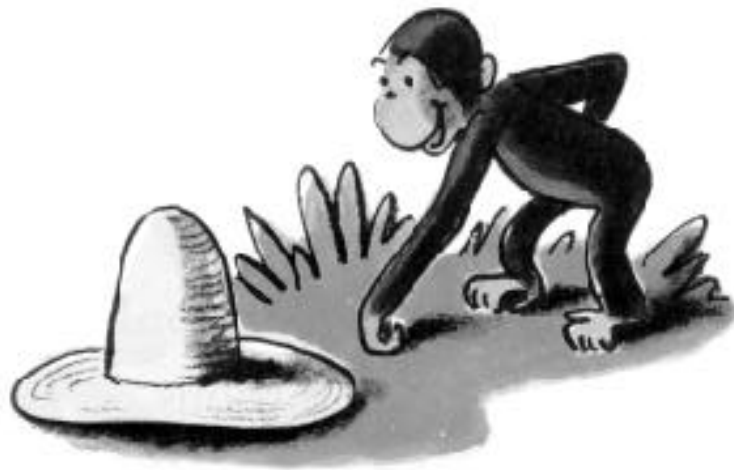
Paste these three pages onto pieces of construction paper. Cut out each of the cards on the dotted line. Shuffle the cards and place them face down on the playing surface. The first player turns two cards face up. If they are the upper and lower case of the same letter they are taken off the board and that player goes again. The player with the most matches at the end of the game is the winner.







Copyright © Houghton Mifflin Company 2001



George hopes you have fun playing his Alphabet Game.